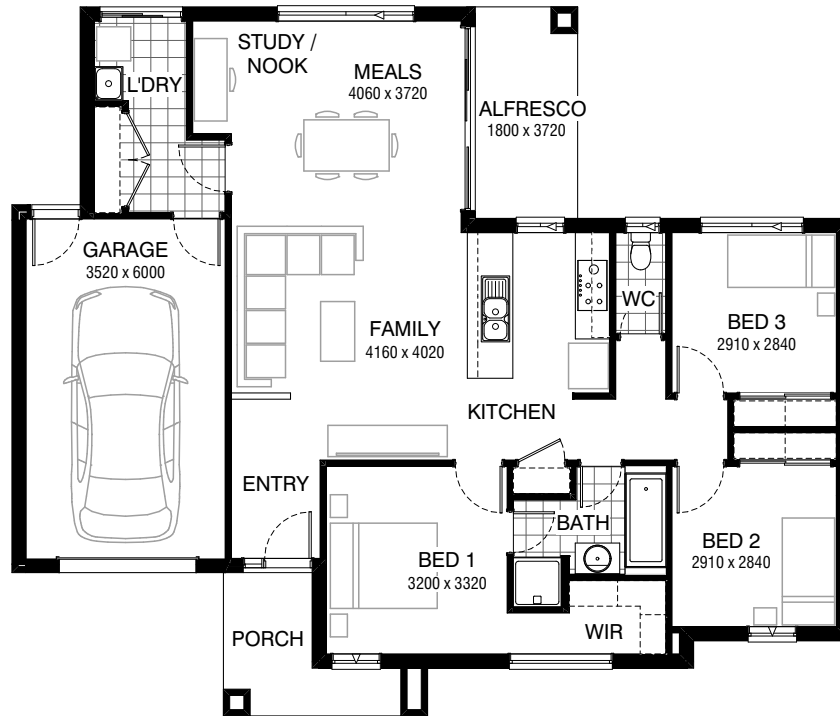


Total squares **15.6sq**

 **3**  **1**  **1**



FLOORPLAN OPTIONS

All available ready-to-go floorplan options for this design can be viewed on the following pages, or visit www.burbank.com.au.

Facades available:

Drysdale, Arkley, Haring	
Dowd, Nolan	
Overall home width	14.75m
Overall home length	12.47m

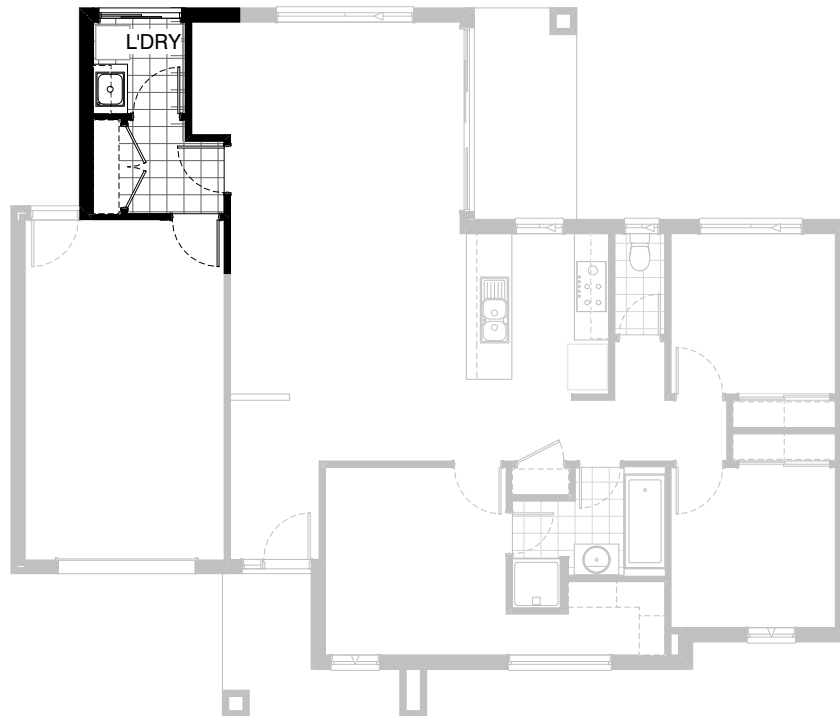
Residence	108.9m ²	11.7sq
Garage	23.7m ²	2.6sq
Porch	5.6m ²	0.6sq
Alfresco	6.7m ²	0.7sq
Total	144.9m²	15.6sq

Listed details based on Drysdale façade floorplan (illustrated)

*Copyright conditions. All photos and illustrations are representative only. Floor plans and specifications may be varied by Burbank without notice, the dimensions are diagrammatic only and a Building Contract with final drawings will display correct dimensions and detail. All designs are the property of Burbank and must not be used, reproduced, copied or varied, wholly or in part without written permission from an authorised Burbank representative. Copyright Burbank Australia Pty Ltd. ABN 91 007 099 872. Builders Registration Number CDB-U-52603.

Call 13 BURBANK
Visit burbank.com.au



FLOORPLAN OPTIONS

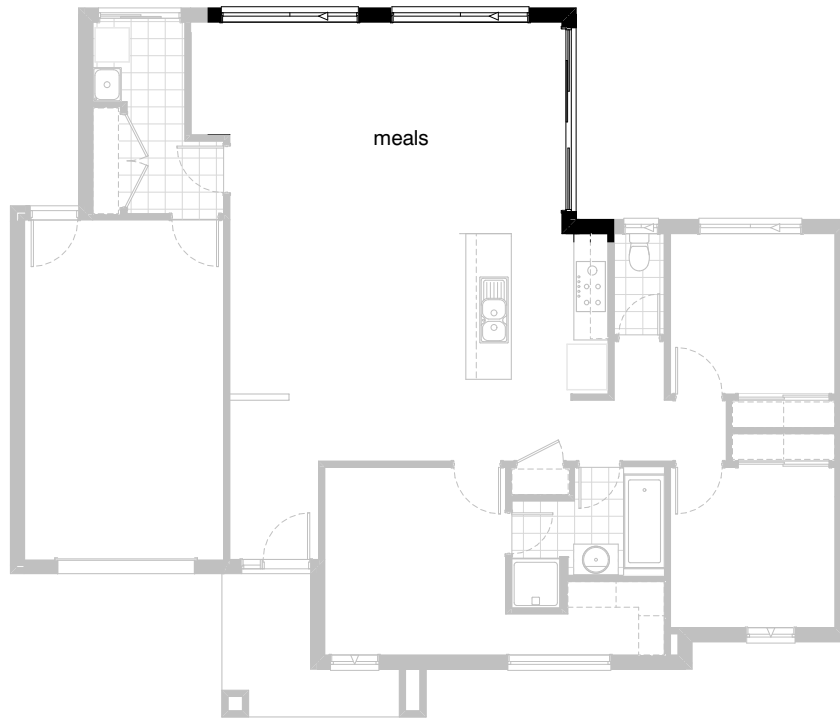


Option LD-1

Provide Laundry Upgrade by increasing width of laundry by 210mm and adjusting the linen cupboard to suit.
Provide Stainless steel inset trough in 32mm laminated bench top,
1no. 800mm base cabinet,
1no. 800mm overhead cabinet,
additional tiled splashback and bench top to suit.

FLOORPLAN OPTIONS

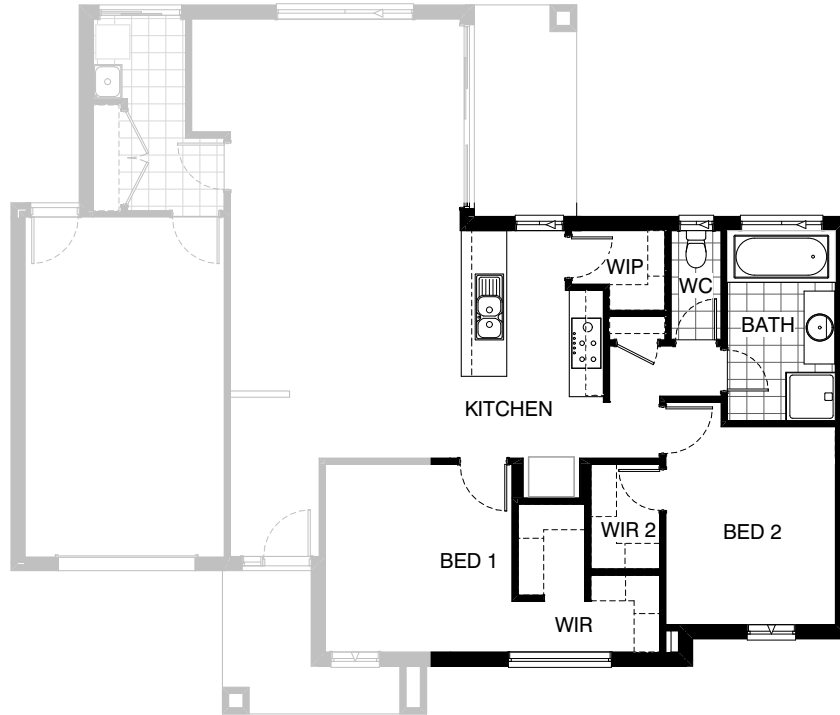
 **3**  **1**  **1**



Option EP1-1

Extend Meals area by removing Alfresco.
Provide an additional 2410mm x 1200mm aluminium sliding window

FLOORPLAN OPTIONS



Option IP1-1

Provide alternative layout by deleting bedroom 3 and relocating bathroom & separate wc in lieu of standard.

Provide 1no 1027mm x 610mm sliding window to WC & 1no. 1450mm x 1200mm aluminium sliding window to bathroom.

Provide His / Hers WIR to bedroom 1 with shelving to suit.

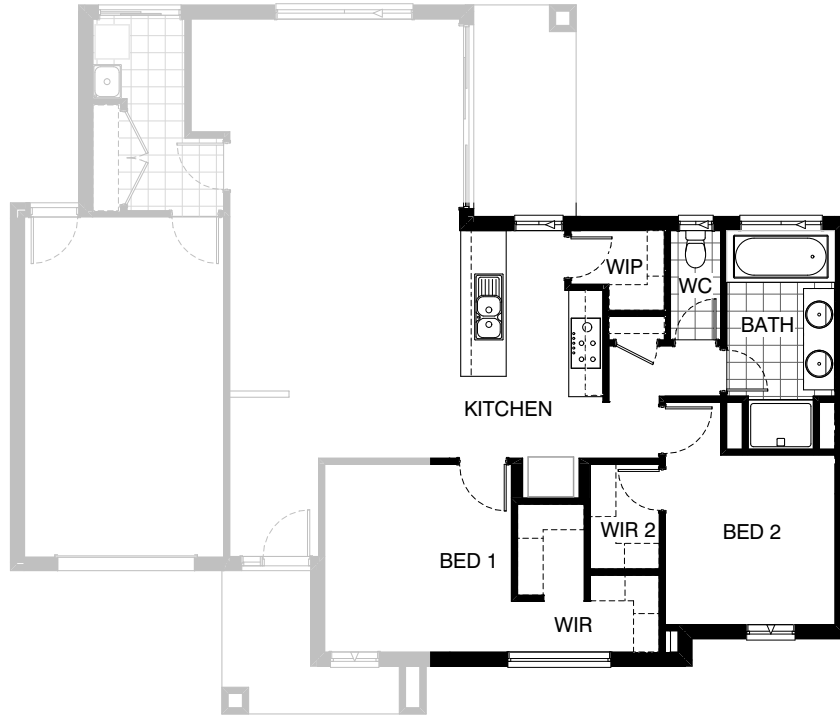
Increase the width of bedroom 2 by 90mm & remove built in robe and provide WIR 2.

Provide a linen cupboard with 4/300mm deep shelving to rear of kitchen.

Relocate kitchen ref space to where bathroom once was and provide WIP to rear of kitchen with 4/450mm & 4/300mm deep shelving.

FLOORPLAN OPTIONS

 **3**  **1**  **1**



Option IP1-2

Provide alternative layout as per IP1-1 & reconfigure bathroom layout by
Providing 2no. basins with 1782mm vanity unit in lieu of standard,
1no. 900mm x 1200mm polymarble shower base in lieu of standard.
Reduce bedroom 2 length by 500mm over IP1-1 option.